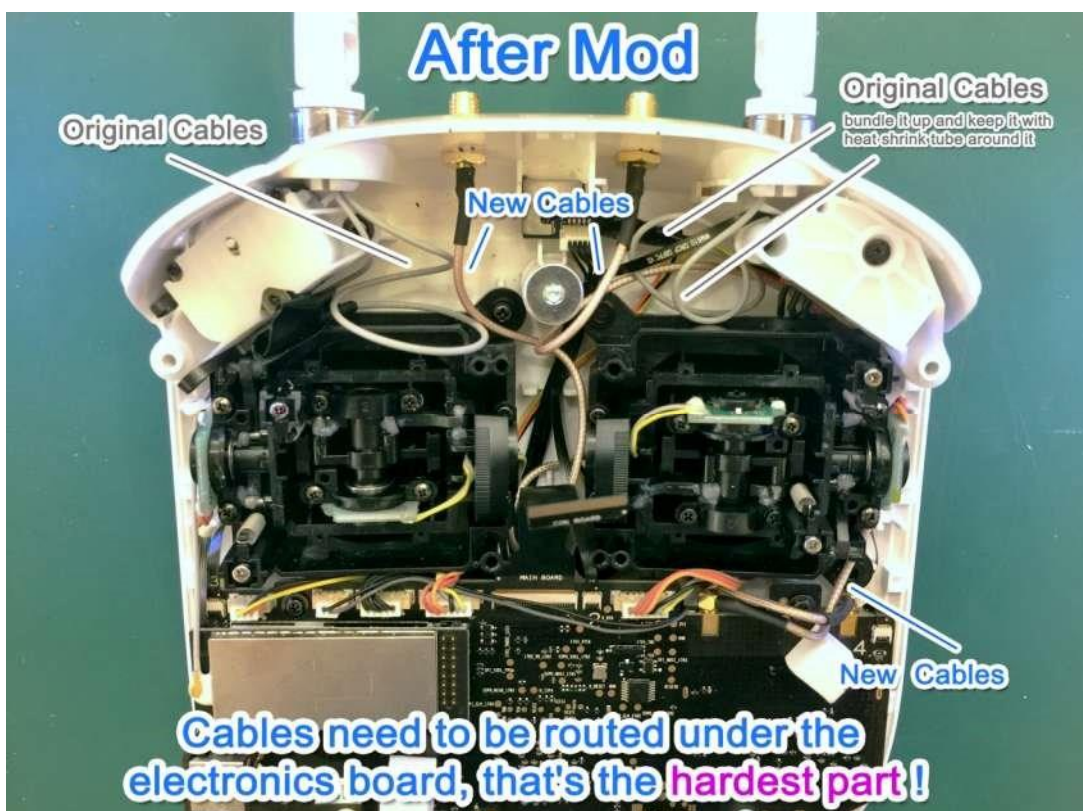
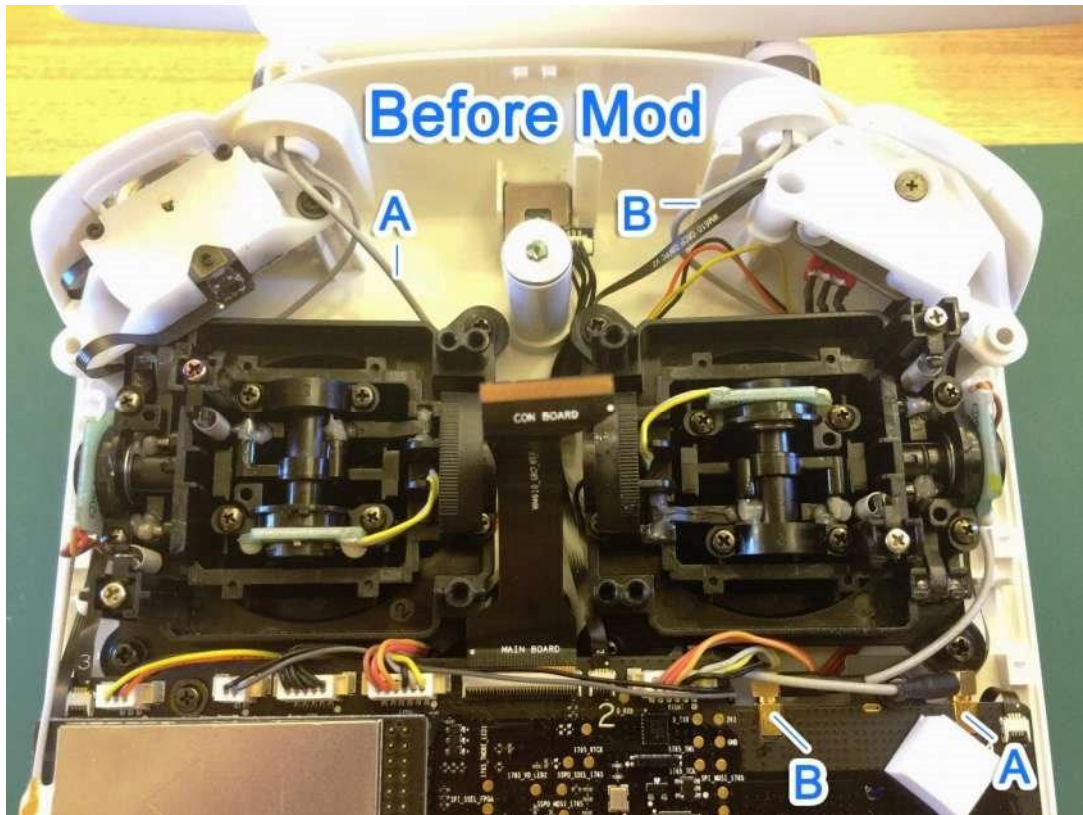
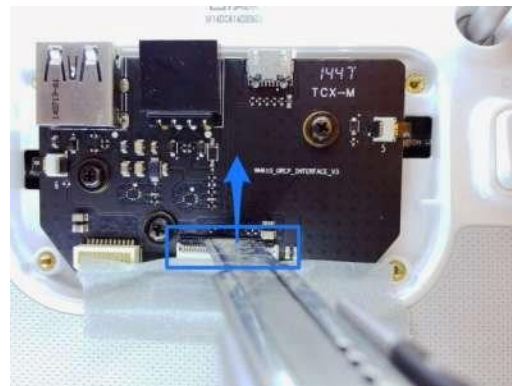


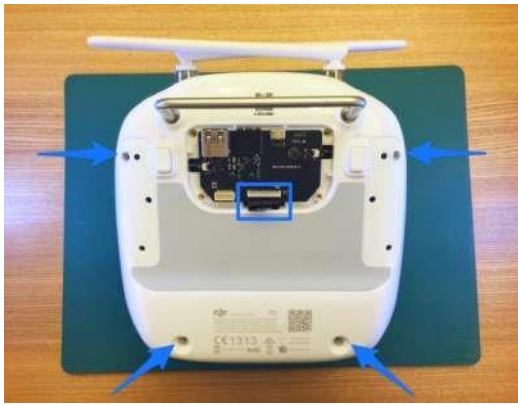
Mission : Upgrade the antenna for DJI Inspire 1 transmitter.

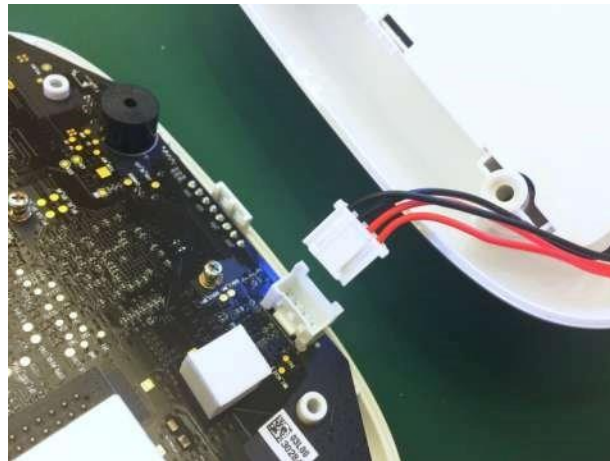
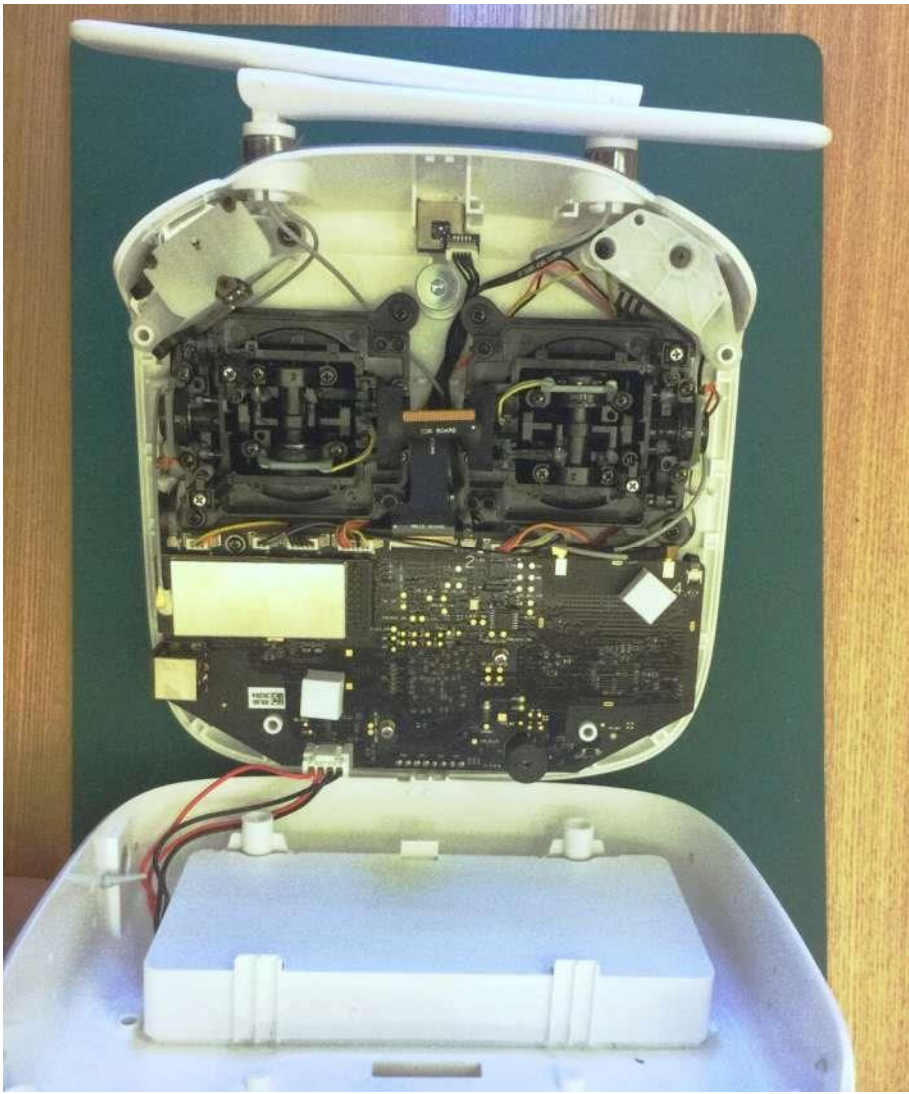


Step 1: - Unscrew and open the case

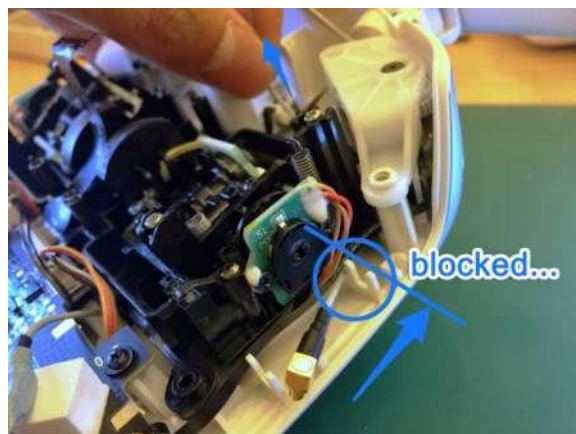
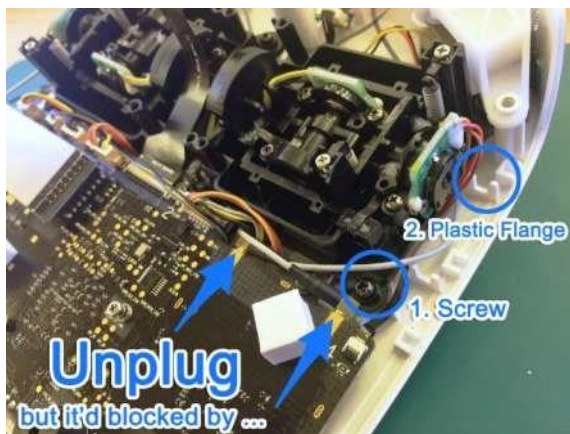
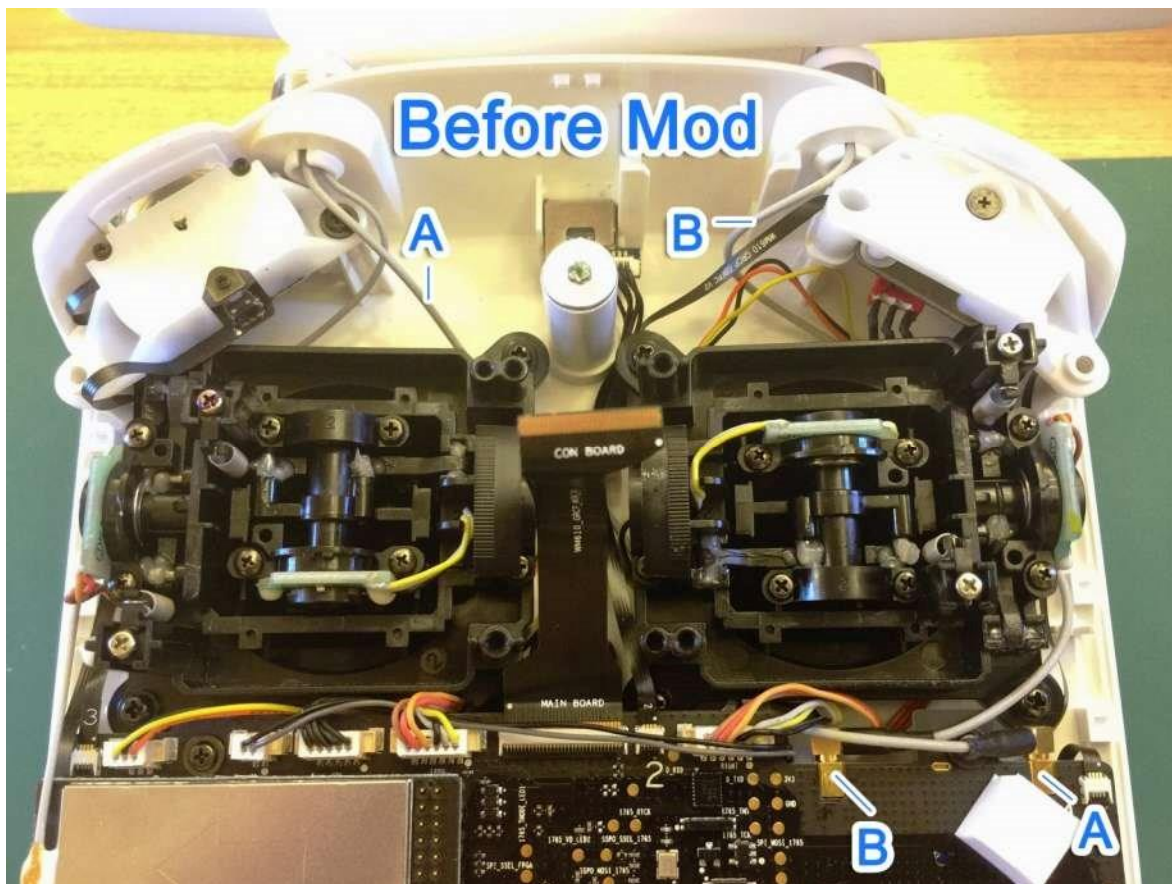






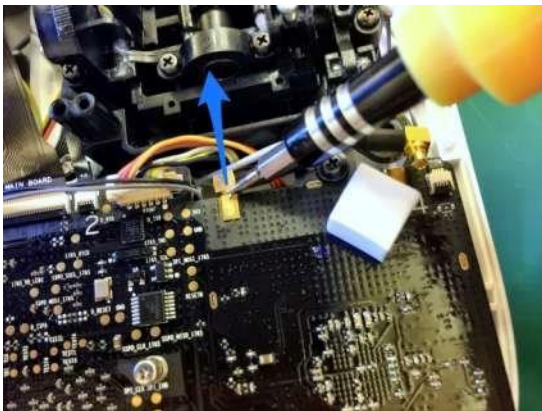
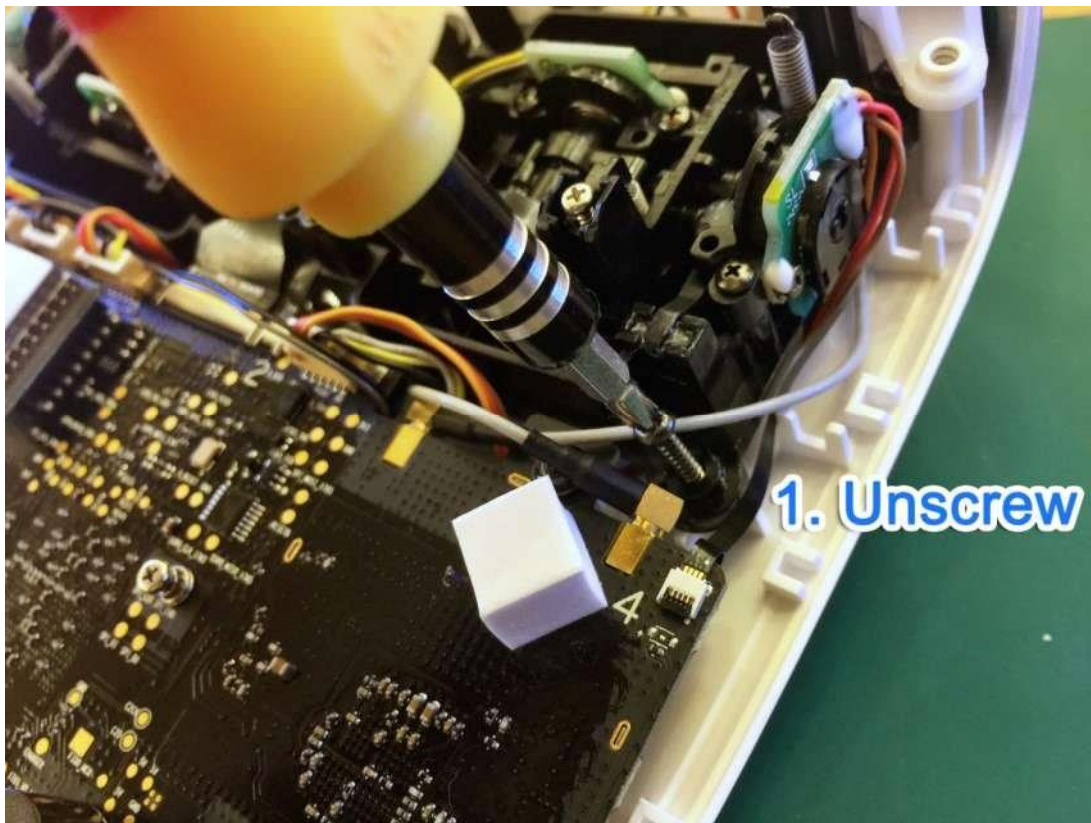


Step 2: - Unplug and pull out the original cables (A&B)

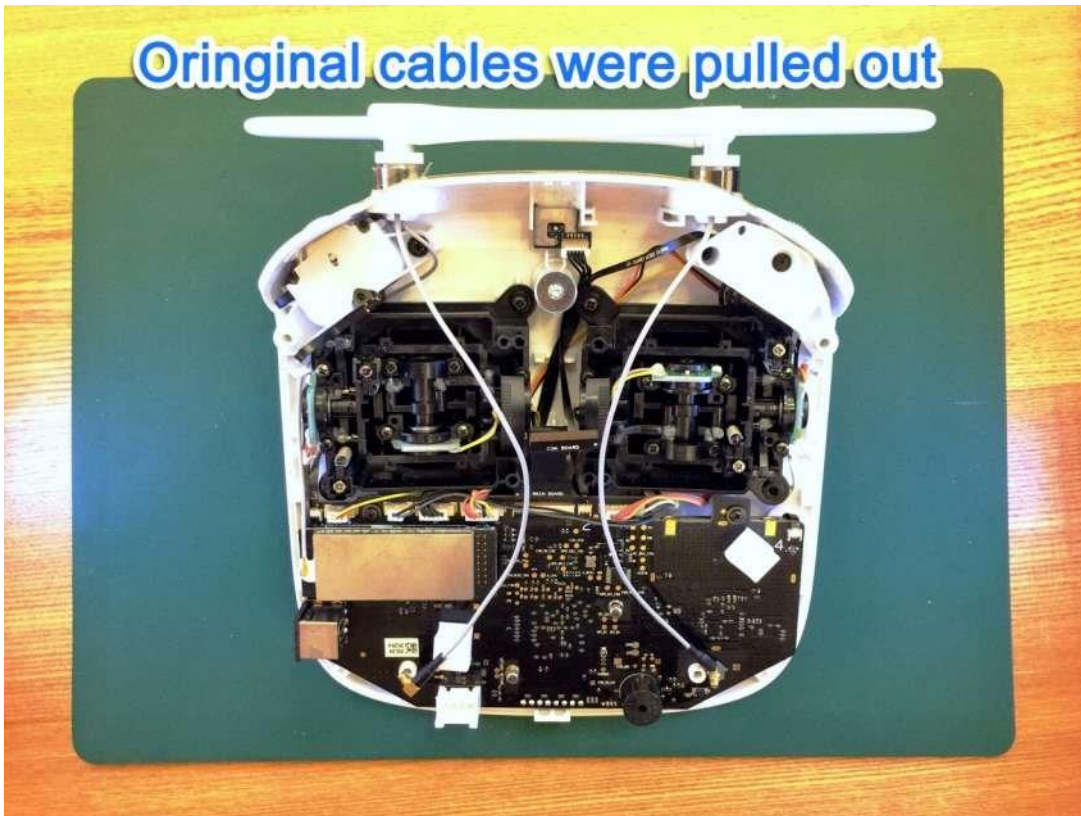
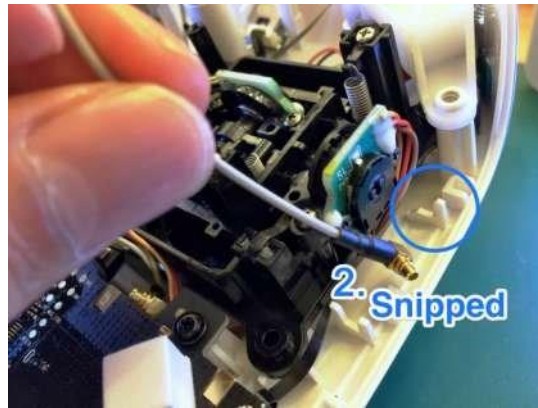
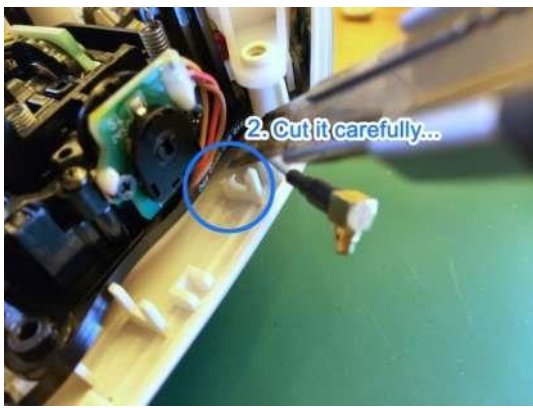


Before you can pull out the cables , you should :

1. Remove the screw , then unplug **Cable A & B**.

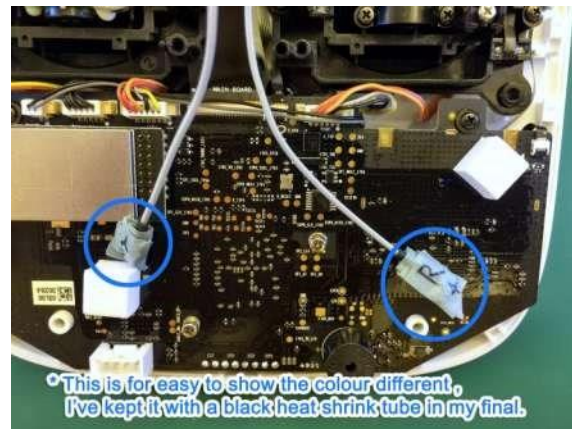


2. Snip the plastic flange then pull out **Cable B**.

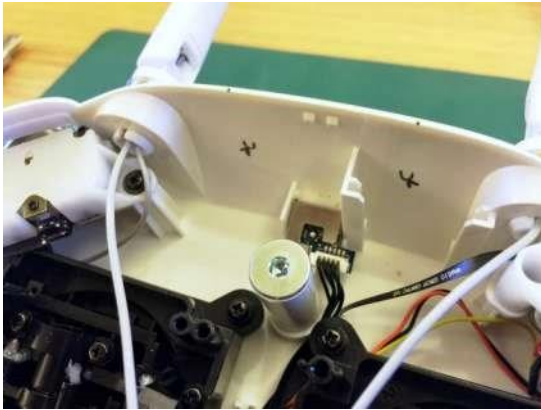


Remarks :

1. Pliers is useful for tiny works.
2. I kept the original cables for spare.



Step 3: - Drill two holes for SMA connectors



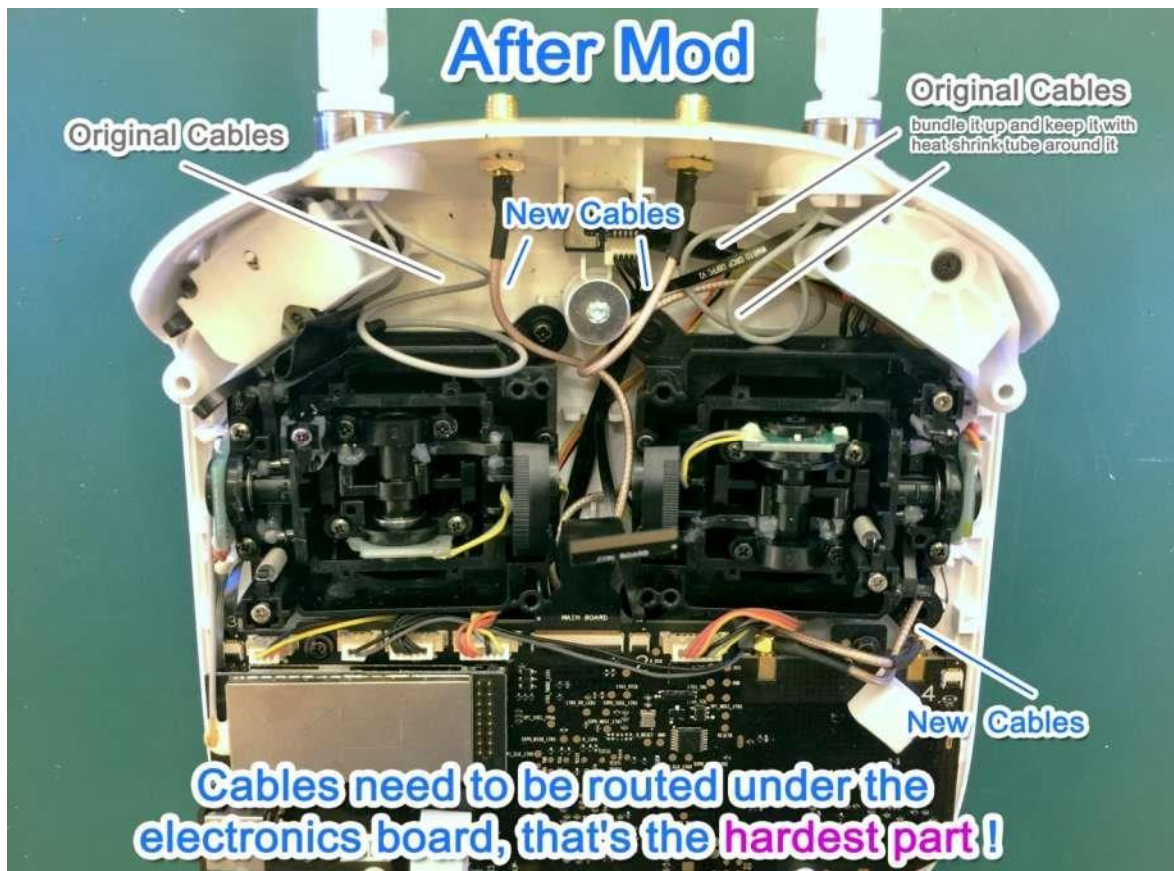


Step 4: - Route the new cables and plug under the board

Insert the new cables gently , those cables are hard to fit under the electronics board so some screws need to be just unscrewed a bit to allow the board to move up a bit if necessary.

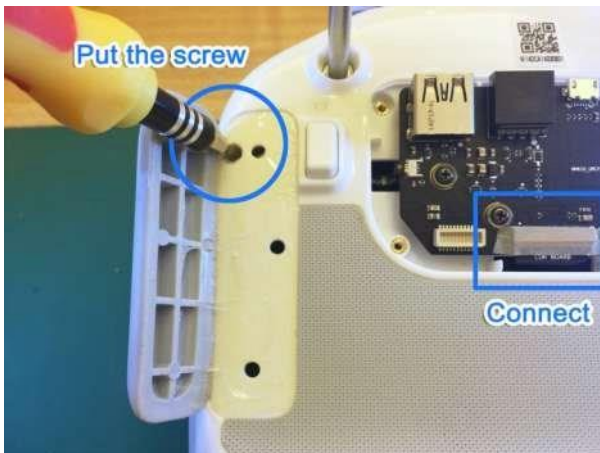
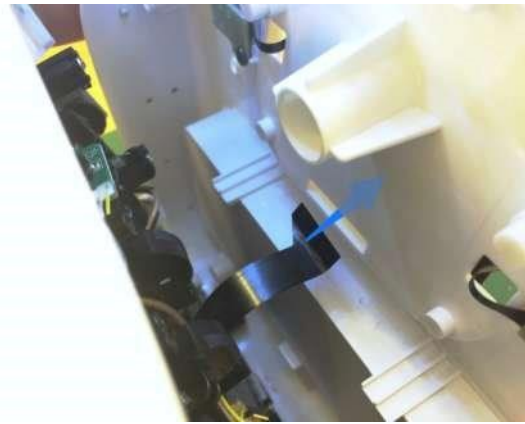
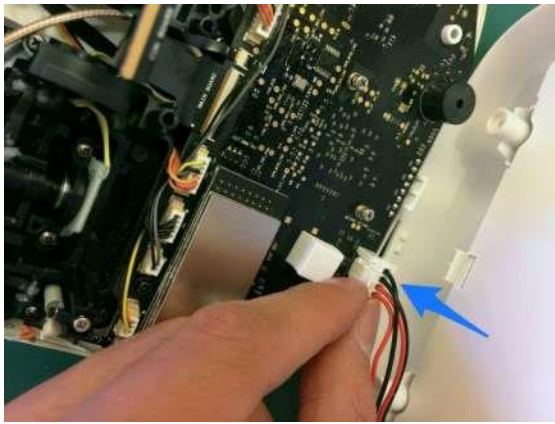
I keep two of the original cables at the top.

To help thread the new cables under the boards I tied a piece of thin string (**dental floss**) to the end of the old cable before I pulled it out. I then tied the floss to the new cable and was able to pull it back under the board.



Step 5: - Restore & done !

Pay attention and double check the cables are not being folded when you close the case.



Mission complete and test your drone ! I hope you enjoy this tutorial.