

5.8
GHz

2.4
GHz





YU15042121A026

2.4 that you are replacing

Remove

WiFi 5.8 that you are replacing

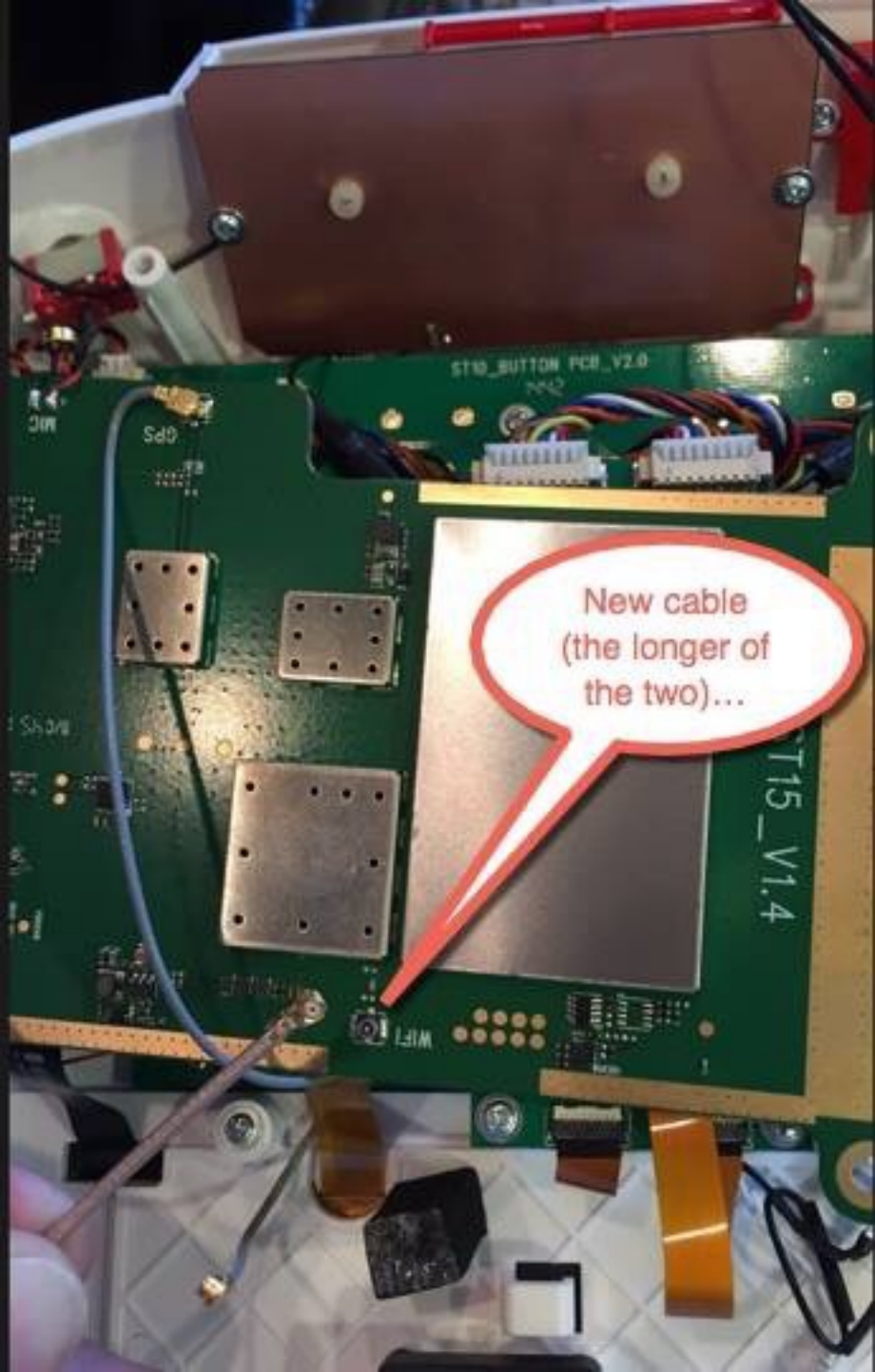
TA15042121C

Carefully lift black bar crimping down ribbon and pull out

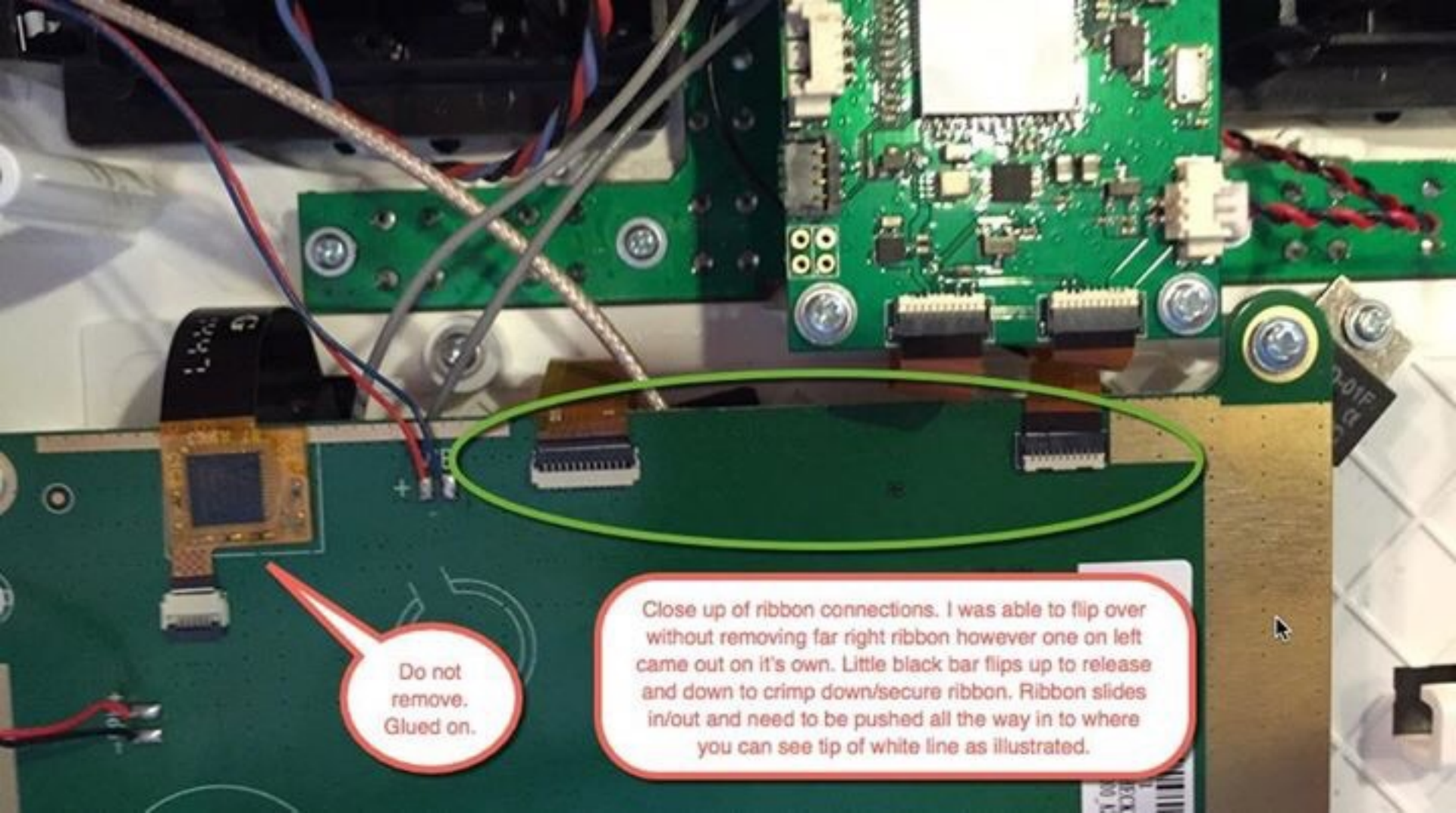
unscrew corners to lift, flip over and access WiFi connection. Note, 1 screw was missing in lower right.



This is the only thing
you are replacing on
this board.

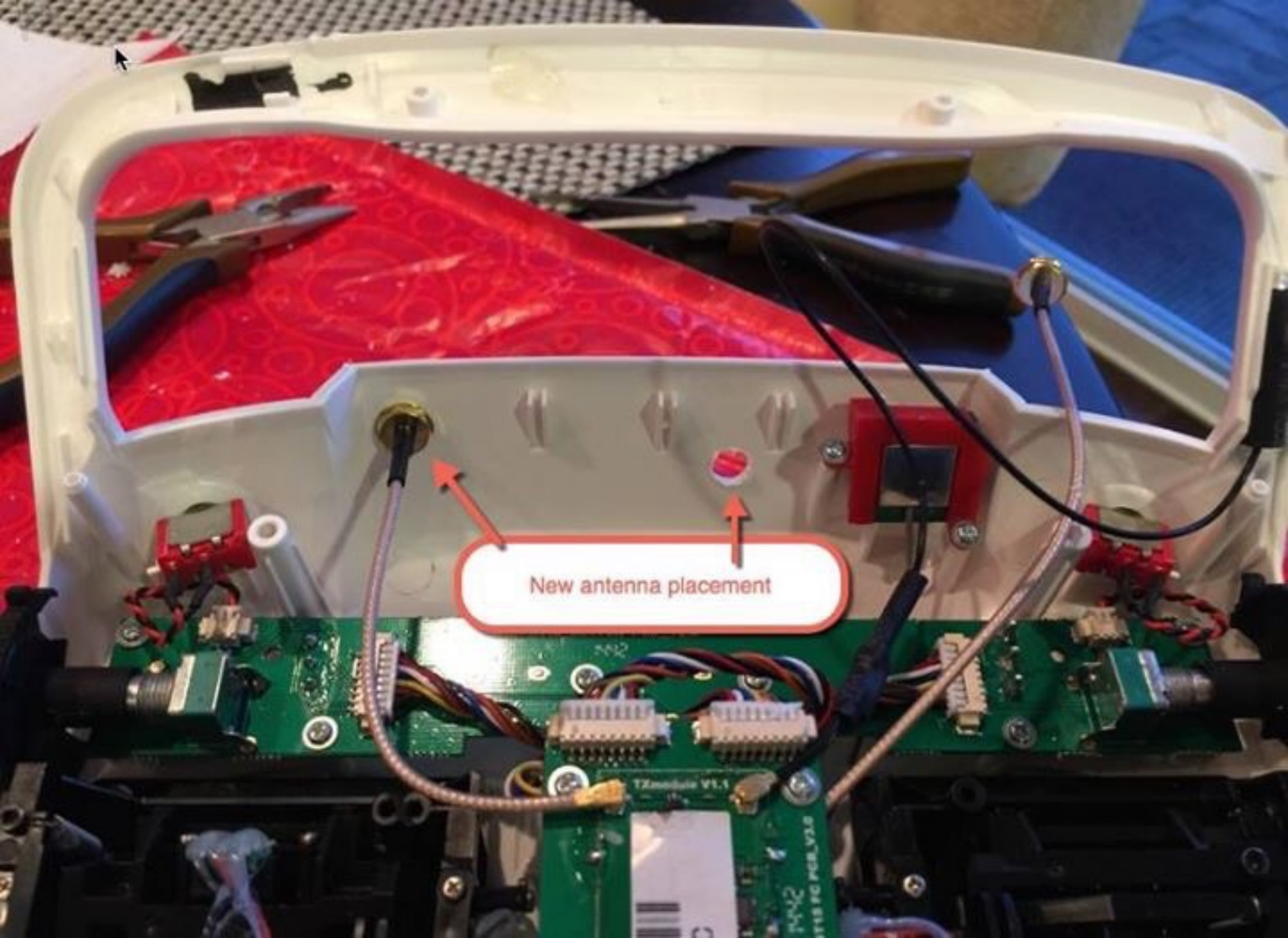


New cable
(the longer of
the two)...



Do not
remove.
Glued on.

Close up of ribbon connections. I was able to flip over without removing far right ribbon however one on left came out on it's own. Little black bar flips up to release and down to crimp down/secure ribbon. Ribbon slides in/out and need to be pushed all the way in to where you can see tip of white line as illustrated.



New antenna placement

TXmodule V1.1

PCB V1.6





